

**FLOOR PLAN GENERAL NOTES**

- A. ALL INT. PARTITIONS TYPE 0.1.F.H. U.O.N.
- B. ALL INT. FURRED PARTITIONS ARE TYPE 0.4.F.H. U.O.N.
- C. PROVIDE BACKING IN WALLS FOR WALL MTD. EQUIP., CASEWORK, TOILET ACCESSORIES, CRASH RAILS, & THE LIKE & OWNER PROVIDED EQUIP., WALL MTD. FURNITURE, ARTWORK & THE LIKE INDICATED ON THE DETAILED PLANS & INT. ELEVATIONS. FOR BACKING DETAILS SEE A10.02.
- D. SEE DETAILED PLANS, A3-SERIES, AND INTERIOR ELEVATIONS, A9-SERIES, FOR ADDITIONAL INFORMATION.
- E. FOR TYP. BELOW GRADE WP. DETAILS, SEE A8.01.
- F. SEE A8.11 FOR ADDITIONAL DIMENSIONS OF EXT. ELEMENTS.
- G. SEE A10.11 FOR COLUMN DETAIL MATRIX.
- H. FOR INTERIOR ELEVATION LOCATIONS, SEE A3-SERIES FOR BSF AND A2-SERIES FOR CSF.
- I. FOR MORE INFORMATION ON DIMENSIONING OF LOBBY, SEE A9.04, A9.05, AND A9.06.
- J. FOR DETAIL OF LOW WALL PARTITIONS AS OPEN WORK AREAS, SEE 9/A10.01
- K. SEE A3 SERIES FOR MORE INFORMATION ON EQUIPMENT AND LABORATORY CASEWORK.
- L. ALL WALLS IN OPEN WORK AREA ARE 0.1.L.W. U.O.N.

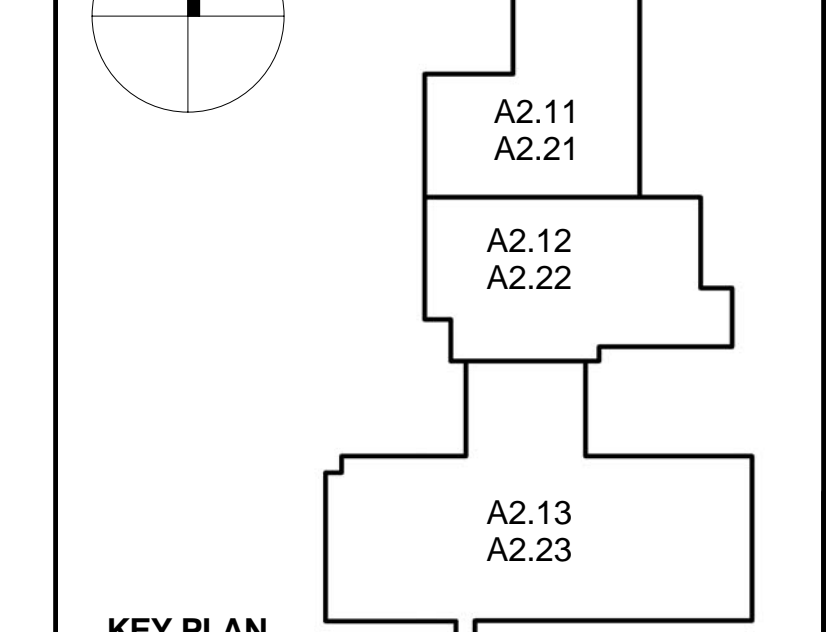
**GENERAL ROOF PLAN NOTES**

- A. SEE SHEET A2.31 FOR TYPICAL ROOF INFORMATION.
- B. SEE SHEET A8.02 FOR TYPICAL ROOFING DETAILS.
- C. SEE 4/A8.02 FOR TYPICAL ROOFING SLOPE DIAGRAM.
  - TYP. ROOF SLOPE AT FLAT STRUCTURE: 1/4" / FT.
  - TYP. ROOF SLOPE AT SLOPED STRUCTURE: 5/8" / FT.
  - TYP. SLOPE AT CRICKETS: 1/2" / FT.
- D. SEE M, E, AND P-SERIES DRAWINGS FOR MORE INFORMATION ON ROOFTOP EQUIPMENT.
- E. ROOF ASSEMBLY IS ROOF ASSEMBLY-1, U.O.N.
- F. SEE A6-SERIES DRAWINGS FOR MORE INFORMATION ON VARIOUS ROOF ASSEMBLIES.
- G. SEE A6-SERIES DRAWINGS FOR PARAPET HEIGHTS.
- H. PAINT ALL EXPOSED MECH. EQUIP. HVAC DUCT WORK, PIPING, SUPP. STRUCTURES, AND THE LIKE. COLOR T.B.D.

**KEY NOTE**

KEY NOTE	DESCRIPTION
1	FE-1 SEM-RECESSED REC. SEE 1/A10.41
2	JANITOR'S UTILITY SHELF
3	LOCKERS, TYPE 2 AND 2A STACKED CANOPY BELOW BY STRUCTURAL GLASS SYSTEM MFR.
4	SEE A9.04, A9.05, A9.06, AND A10.51 FOR MORE INFORMATION ON LOBBY PARTITIONS
5	EXPANSION JOINT S.S.D.
6	STEPS AT 1'-0" TRANSITION AT ACCESS FLOORING
7	PROVIDE ADDITIONAL LAYER OF 5/8" GWB ON WALL TYPE INDICATED. SEE INTERIOR ELEVATIONS FOR ADDITIONAL INFORMATION.

**LEGEND**



**KEY PLAN**

PACKAGE 3 - BID SET	10/15/2008
PACKAGE 3 - FINAL REVIEW SET	9/16/2008
PACKAGE 3 - 50% REVIEW SET	8/18/2008
PACKAGE 2B - BID SET	7/15/2008
PACKAGE 2A - BID SET	6/25/2008

NO.	REVISION	DATE

**K M D**  
 KAPLAN MCLAUGHLIN DIAZ, INC.  
 ARCHITECTURE PLANNING  
 1011 WESTERN AVENUE SUITE 1014  
 SEATTLE WASHINGTON 98104  
 (206) 467-1004 FAX (206) 467-1023



**BUILD TO SUIT FOR  
 BATTELLE BY THE  
 COWPERWOOD COMPANY**

**BIOLOGICAL AND  
 COMPUTATION SCIENCES  
 FACILITY**

3300 STEVENS DRIVE | RICHLAND, WA

PROJECT NO.	392-504
DRAWN BY	CHKD BY DATE
DATE	9/16/08
SCALE	As indicated
TITLE	FLOOR PLAN - LEVEL 2 - CSF
NUMBER	<b>A2.23</b>