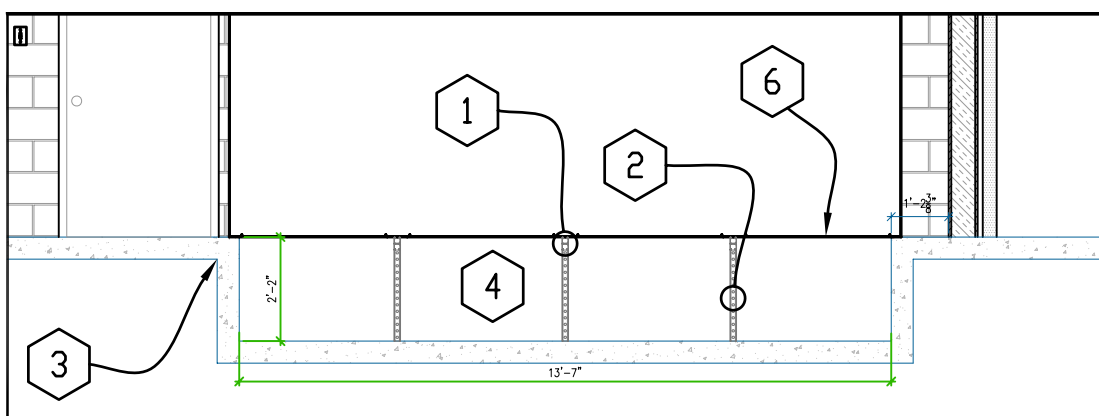


Notes:

- 1 Back to back horizontal unistrut brace, placed at switchboard section joints (typical).
- 2 Unistrut brace anchored to wall of trench to support the horizontal brace (typical).
- 3 Concrete slab, thickness not necessarily shown accurately.
- 4 Wireway trench, inside dimensions are maximums, but depth is minimum.
- 5 Switchgear inner opening size, trench dimensioned to match it exactly.
- 6 Switchgear outline.
- 7 2"x2"x1/4" angle iron anchored to trench sides, 1/4" below top lip.
- 8 1/4" thick aluminum diamond plate sheet metal bolted to angle iron. The reason for this is because we don't know the size of the future switchgear, so this allows for almost anything. It will be removed (or partially removed and cut to fit) when future switchgear is set in place.

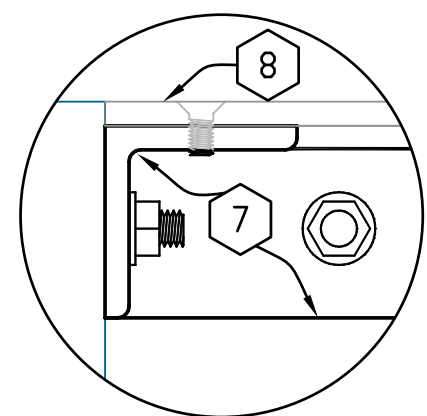
Electrical Room 1220 Trenches

Scale: 1/4" = 1'



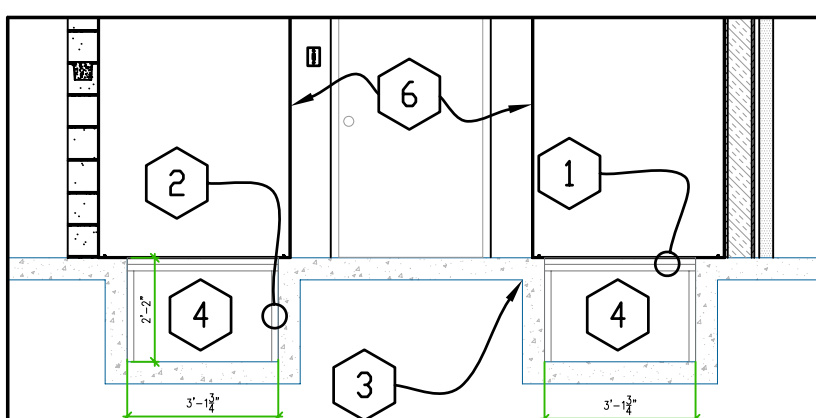
Section A-A

Scale: 1/4" = 1'



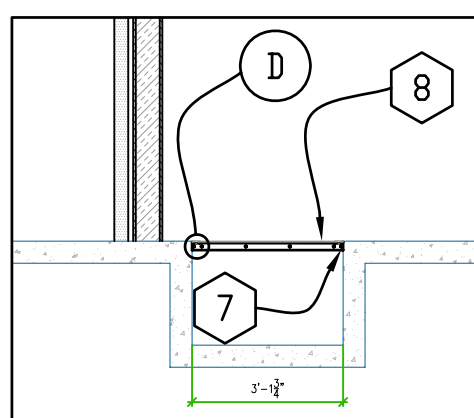
View D

Scale: 6" = 1'



Section B-B

Scale: 1/4" = 1'



Section C-C

Scale: 1/4" = 1'

ES7.01B

v. 08-05-08