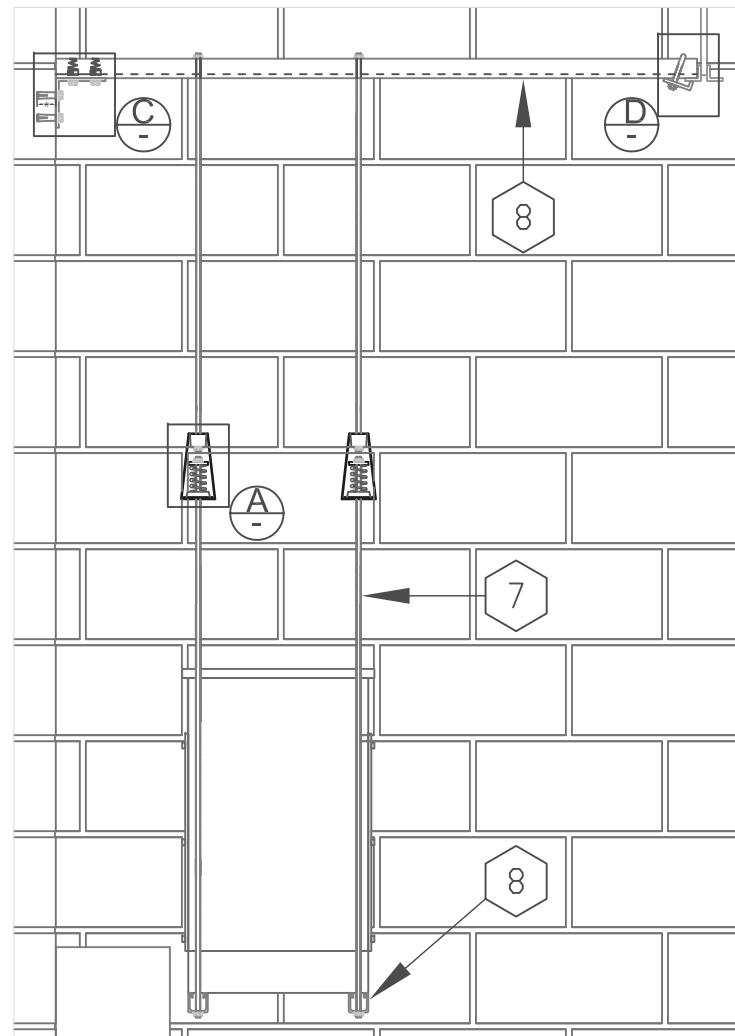


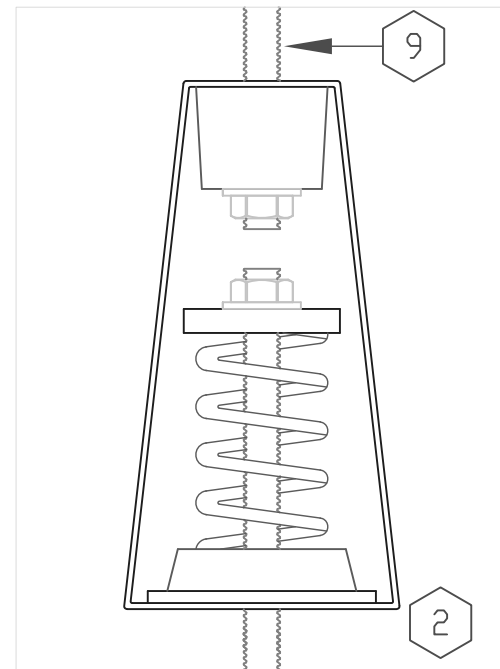
Front View

Scale: 1"=1'



Side View

Scale: 1"=1'

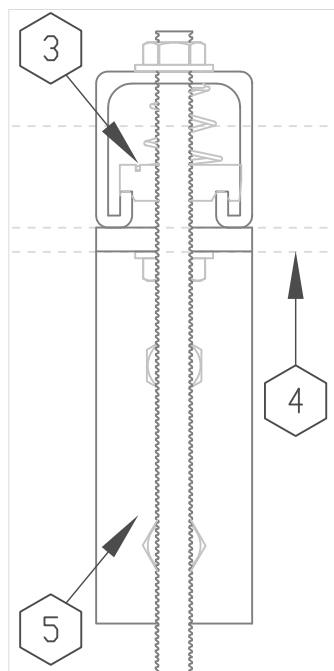


Detail A

Scale: 6"=1'

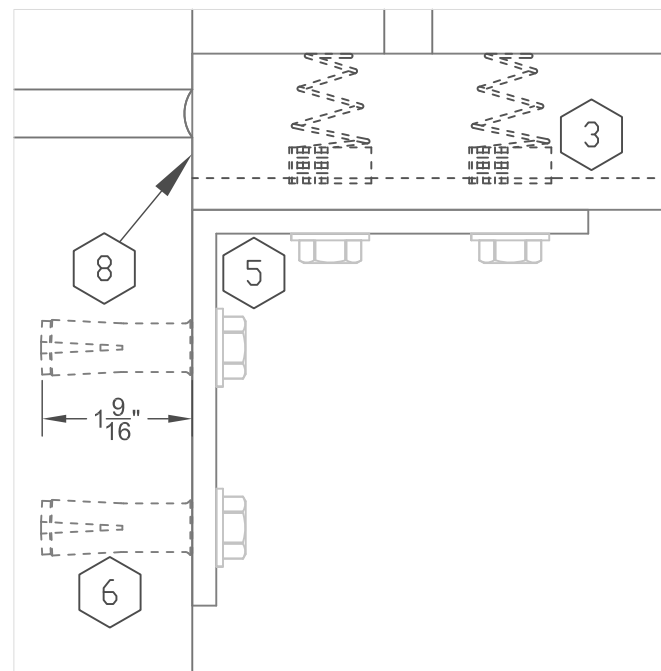
Drawing Notes:

- 1 Typical transformer, 15-30 kVA size shown.
- 2 Type 30N-7X-76 vibration isolator (previously submitted):
- 3 3/8" Spring-nut (typical).
- 4 Structural iron (dotted lines indicate that it is in the foreground, looking "through" it and ignoring the U-Bolt clamps shown on Detail D).
- 5 L-Bracket, attachment bolts are 3/8"-16 UNC.
- 6 3/8" Drop-in Anchor (typical), similar to Hilti HDI Drop-in Anchor. Embedded length is nominal.
- 7 U-Bolt beam clamp, similar to B-Line #B441-22
- 8 1-5/8" Unistrut (or similar), 14 gauge minimum.
- 9 3/8" All thread rod (typical), sized are as per the vibration isolators submittal sheet. Isolator may be located at any point along the rod



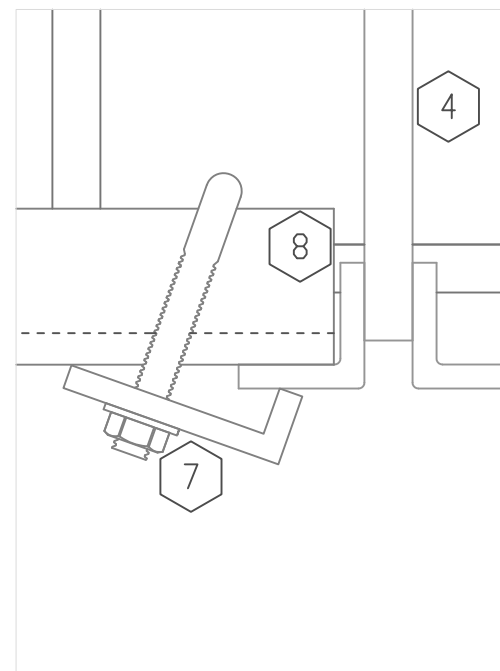
Detail B

Scale: 6"=1'



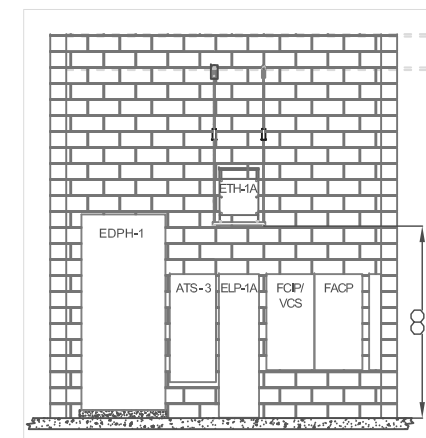
Detail C

Scale: 6"=1'



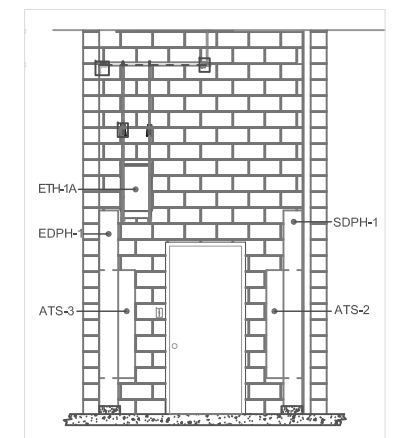
Detail D

Scale: 6"=1'



1220 South Wall

Scale: 1"=8'



1220 West Wall

Scale: 1"=8'

Hanging Transformer Mounting Details