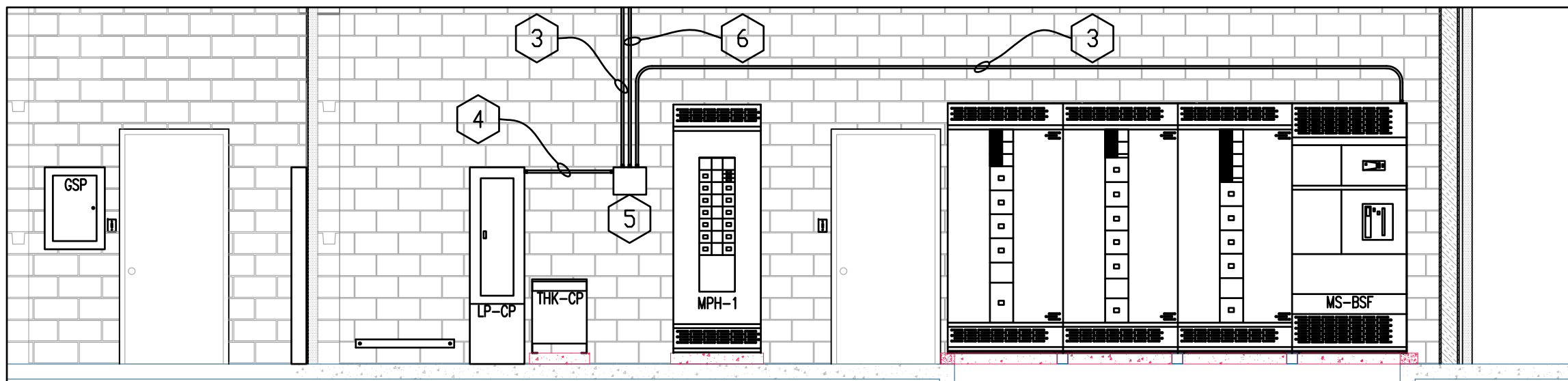


Rooms 1220 and 1222 Floor Plans

Scale: 1"=4'

Keyed notes:

- 1 1/2" EMT with (1) Belden #9842 cable
- 2 3/4" EMT with (2) Belden #9842 cable
- 3 1/2" EMT with (1) Cat 5e cable
- 4 1/2" EMT with (3) #12 THHN's. Connect circuit to Breaker #13 in Panel LP-CP. Provide handle lock device to prevent accidental de-energization.
- 5 Square D NEMA 12 interface box. Low voltage wiring terminated by others.
- 6 Route (2) Plenum Rated Cat 5e cables to Cowperwood's office. Route them in conduit up the wall, then open cable to their destination, using the cable tray system.
- 7 Provide and install a 10/100 switch in Cowperwood's office to tie the metering system into their building management system.
- 8 Where ever cables enter switchgear, ensure that their voltage rating is adequate for the equipment. Provide 600 volt rated heat-shrink tubing over exposed cables where necessary.



West Wall Elevation

Scale: 1"=4'