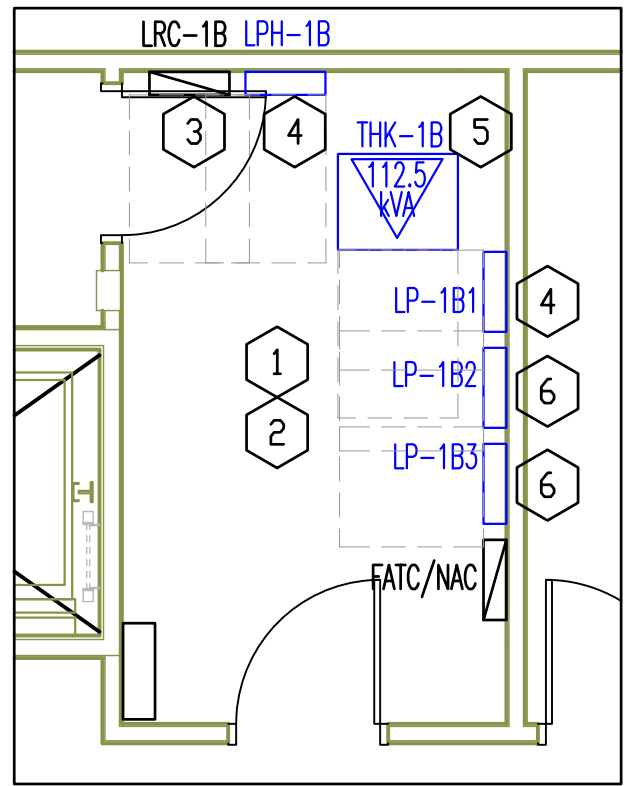


Housekeeping Pads

Scale: 1"=4'



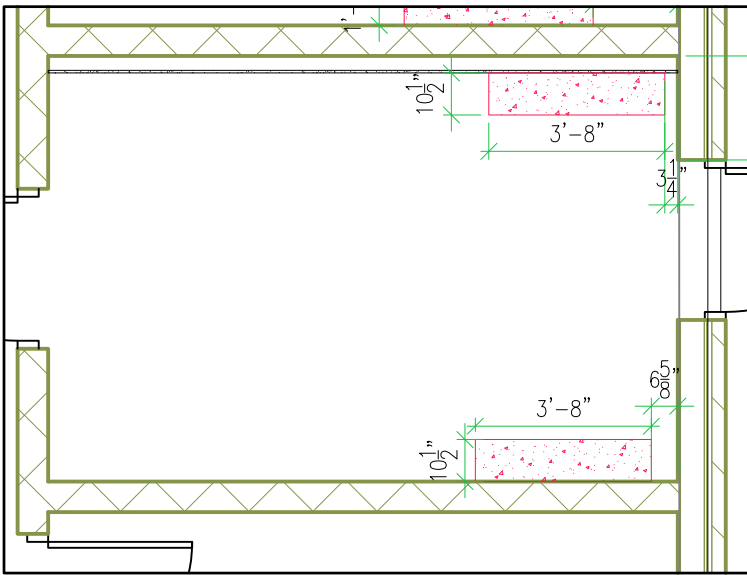
Switchgear Information

Scale: 1"=4'

Flagged notes:

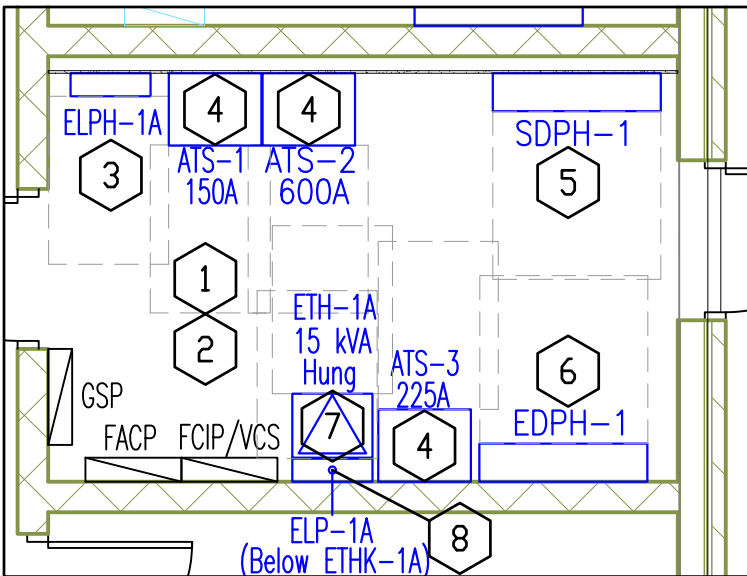
- 1 Dashed lines indicate code required clearance zones.
- 2 Top of all panels at 6'-0" unless otherwise indicated.
- 3 Bottom at (? unknown at this time), weight unknown.
- 4 Top at: 86", bottom on floor, weight unknown.
- 5 Top at: 37.41", bottom at: 3.56" (above housekeeping pad), weight: 675 pounds.
- 6 Bottom at 10" above floor, weight unknown.

Housekeeping Pads and Switchgear Information



Housekeeping Pads

Scale: 1"=4'



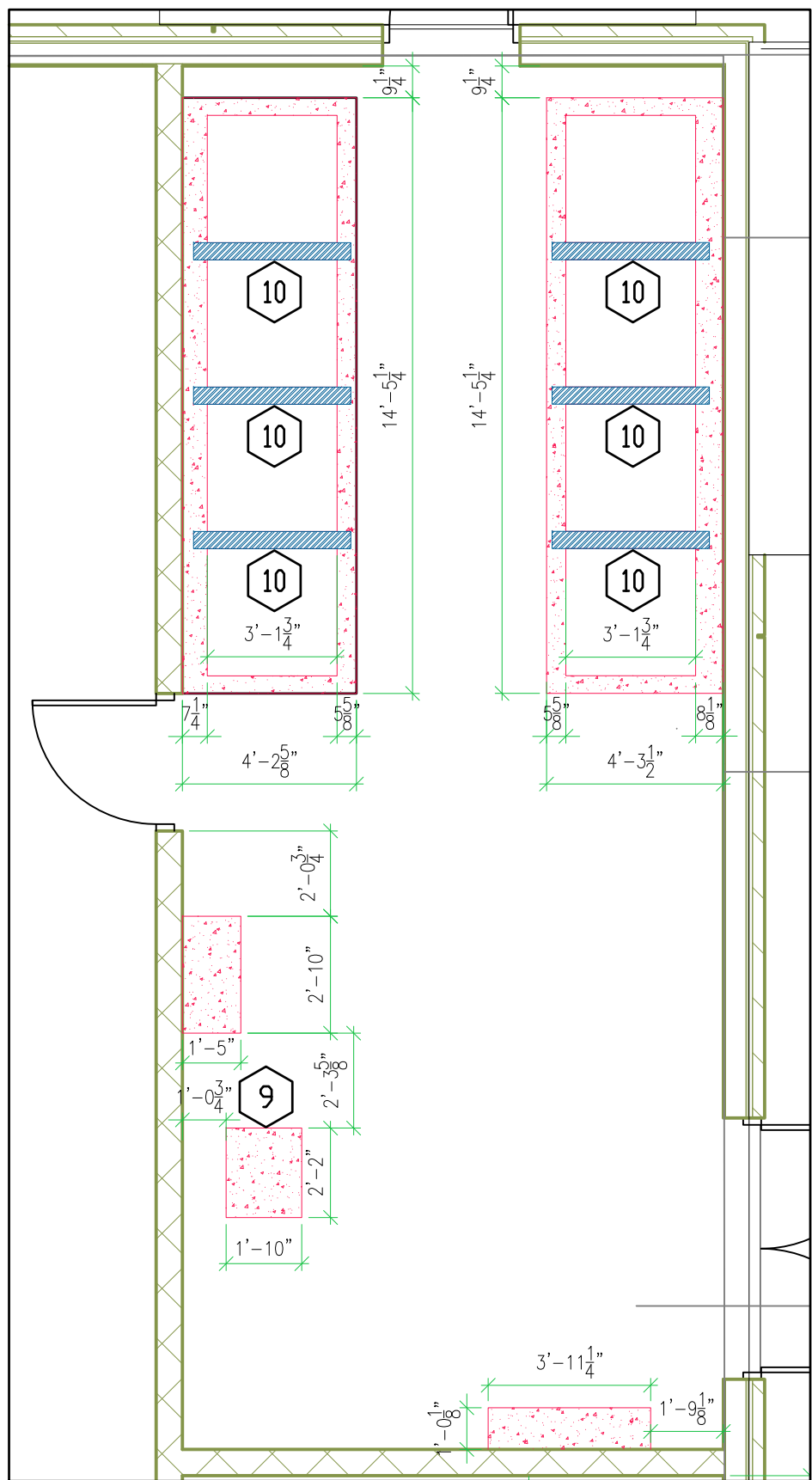
Switchgear Information

Scale: 1"=4'

Flagged notes:

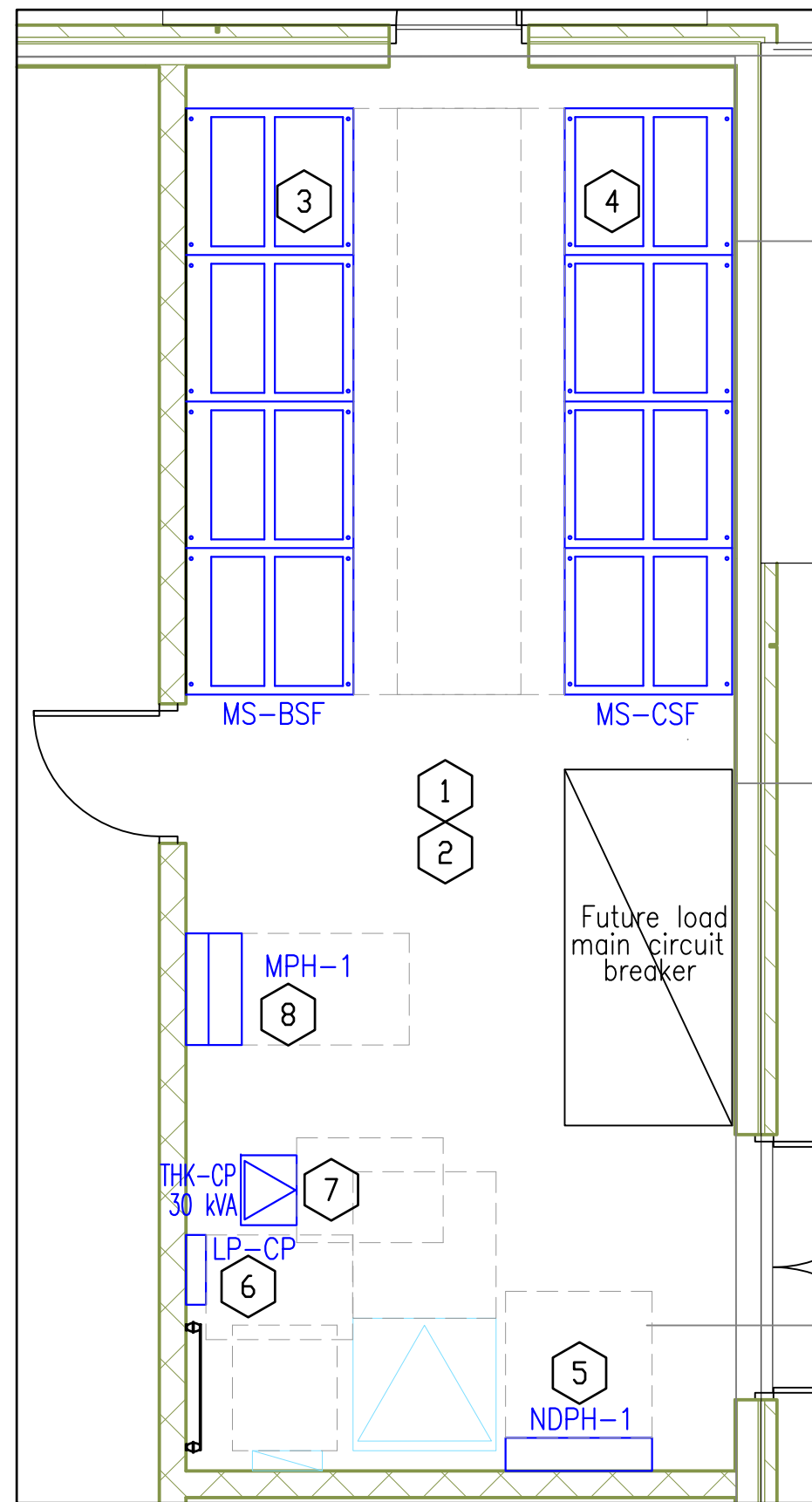
- 1 Dashed lines indicate code required clearance zones.
- 2 Top of all panels at 6'-0" unless otherwise indicated.
- 3 Bottom at 28", above floor weight unknown.
- 4 Bottom at 18" above floor, weight: ~225 pounds.
- 5 Top at: 80", bottom on floor, weight unknown.
- 6 Top at: 98", bottom on floor, weight unknown.
- 7 Bottom at ~8'2" above floor, top at ~10'5" above floor (this transformer is hung, and exact dimensions of the hardware and vibration isolators isn't known), weight: 360 pounds. This transformer may have to be moved toward the middle of the room, if the inspector determines it can't be over the headroom of Panel ELP-1A. We'll confirm before installing it.
- 8 Bottom at 22" above floor, weight unknown.

Housekeeping Pads and Switchgear Information



Housekeeping Pads

Scale: 1"=4'

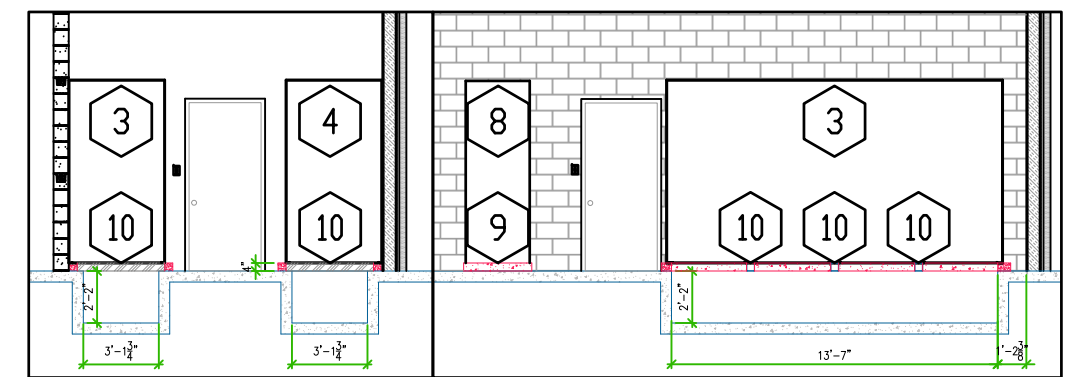


Switchgear Information

Scale: 1"=4'

Flagged notes:

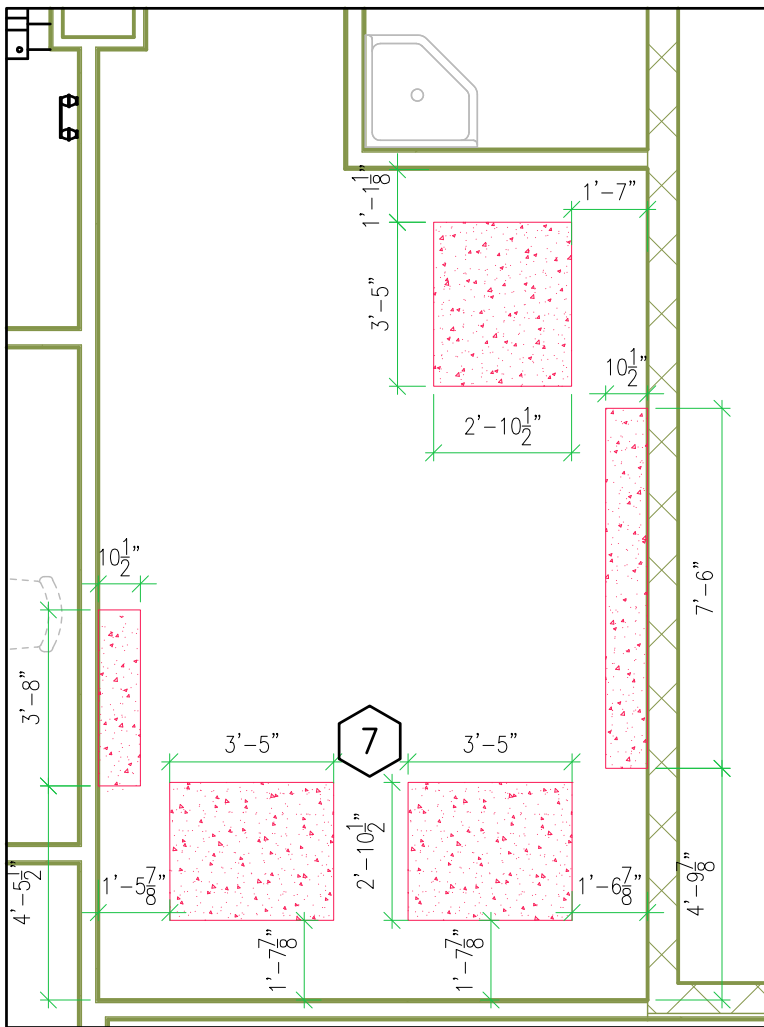
- 1 Dashed lines indicate code required clearance zones.
- 2 Top of all panels at 6'-0" unless otherwise indicated.
- 3 Top at: 91.5" (above pad), bottom on floor, weight 7,660.
- 4 Top at: 91.5" (above pad), bottom on floor, weight 7,780.
- 5 Top at: 98", bottom on floor, weight unknown.
- 6 Bottom at 22" above floor, weight unknown.
- 7 Top at: 27", bottom at: 3.5" (above housekeeping pad), weight: 360 pounds.
- 8 Top at: 91", bottom on floor, weight unknown.
- 9 This pad may be extended back to wall if it's more cost effective.
- 10 4" Square tube supports at switchboard joints, anchored at both ends, then poured into housekeeping pads.



Trench and Pad Sections

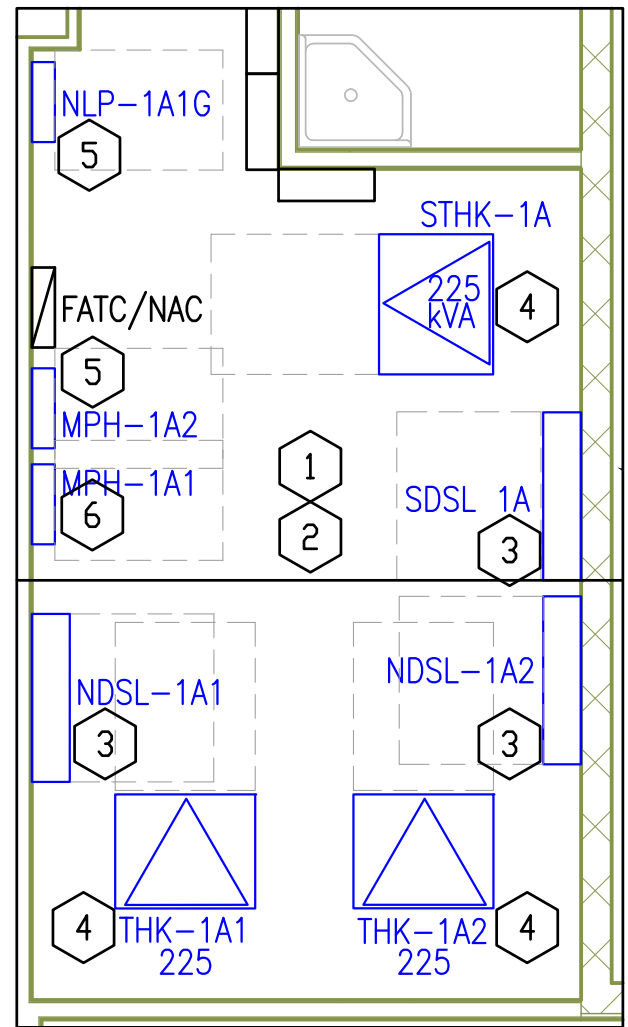
Scale: 1"=8'

Housekeeping Pads and Switchgear Information



Housekeeping Pads

Scale: 1"=4'



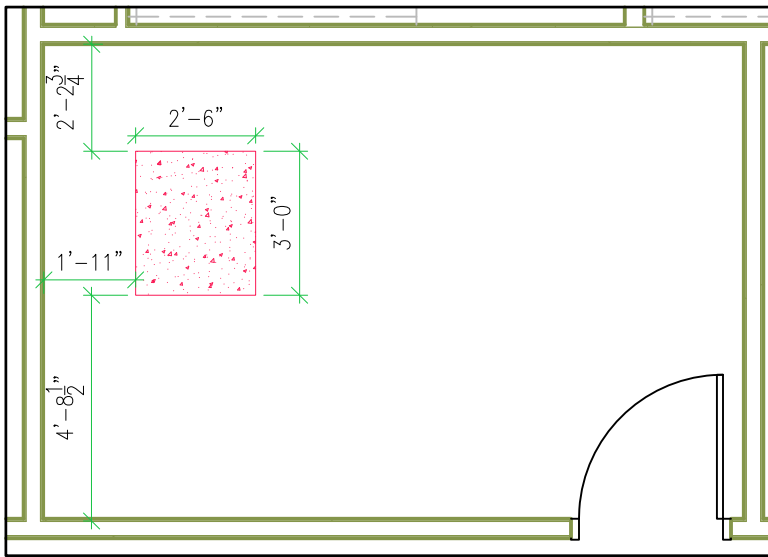
Switchgear Information

Scale: 1"=4'

Flagged notes:

- 1 Dashed lines indicate code required clearance zones.
- 2 Top of all panels at 6'-0" unless otherwise indicated.
- 3 Top at: 86", bottom on floor, weight unknown.
- 4 Top at: 49.64", bottom at: 3.81" (above housekeeping pad), weight: 1,125 pounds.
- 5 Bottom at 28" above floor, weight unknown.
- 6 Bottom at 16" above floor, weight unknown.
- 7 These pads may be joined into one if it's more cost effective to do that way.

Housekeeping Pads and Switchgear Information



Housekeeping Pads

Scale: 1"=4'

Flagged notes:



Dashed lines indicate code required clearance zones.



Top of all panels at 6'-0" unless otherwise indicated.



Bottom at 16" above floor, weight unknown.



Top at: 74", bottom on floor, weight unknown.



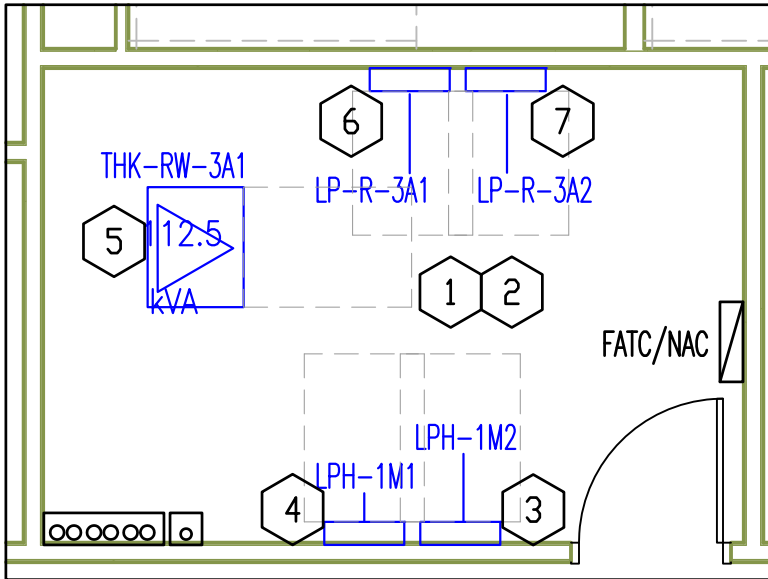
Top at: 37.41", bottom at: 3.56" (above housekeeping pad), weight: 675 pounds. This may end up shifting northward if the conduit stub-ups in the slab allow it. This is so we can route the secondary conduits out of the side into Panel LP-R-3A1 without creating a tripping hazard in an area that people might try to walk through.



Top at 86", bottom on floor, weight unknown.



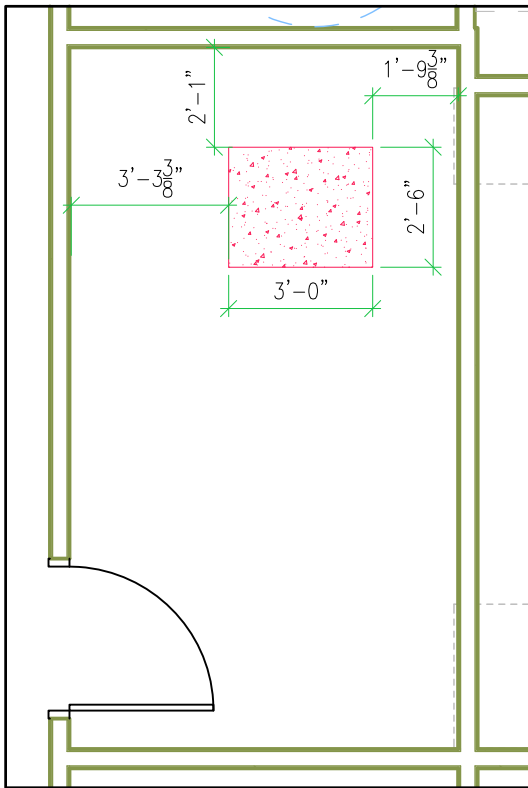
Bottom at 10" above floor, weight unknown.



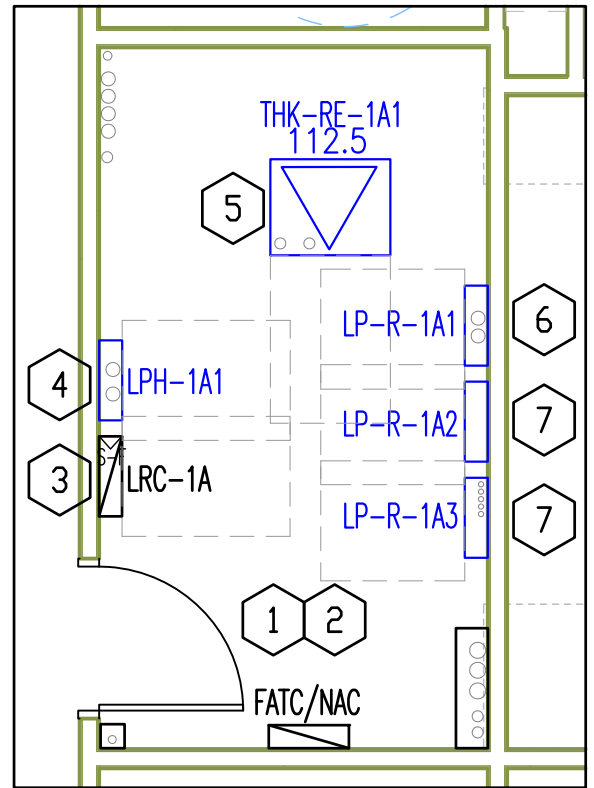
Switchgear Information

Scale: 1"=4'

Housekeeping Pads and Switchgear Information



Housekeeping Pad Scale: 1"=4'

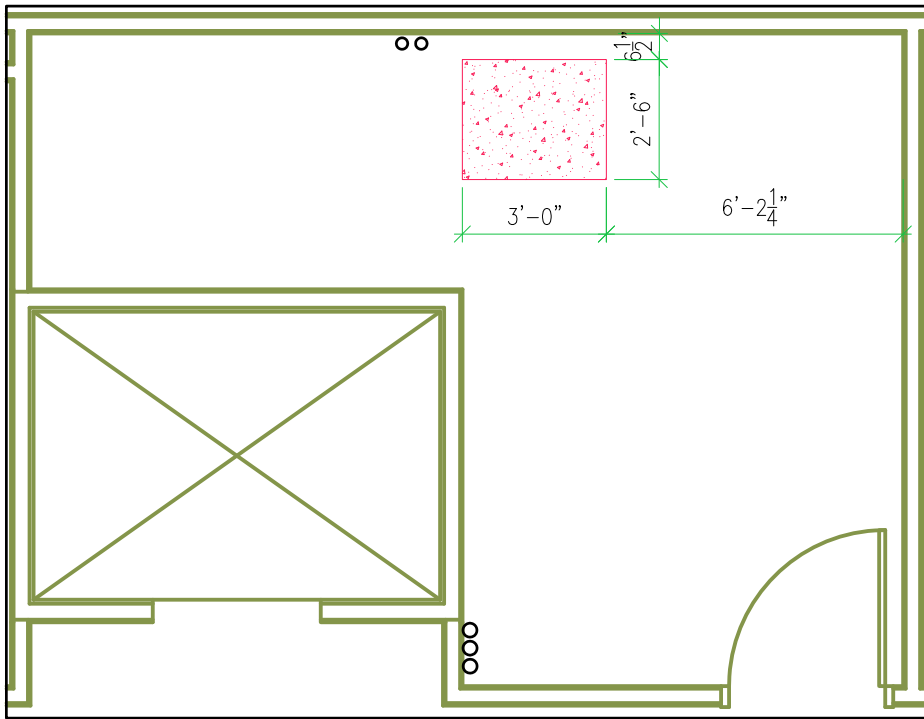


Switchgear Information Scale: 1"=4'

Flagged notes:

- 1 Dashed lines indicate code required clearance zones.
- 2 Top of all panels at 6'-0" unless otherwise indicated.
- 3 Bottom at (? unknown at this time) above floor, weight unknown.
- 4 Bottom at 16, weight unknown.
- 5 Top at: 37.41", bottom at: 3.56" (above housekeeping pad), weight: 675 pounds. This may end up shifting westward if the conduit stub-ups in the slab allow it. This is so we can route the secondary conduits out of the side into Panel LP-R-1A1 without creating a tripping hazard in an area that people might try to walk through.
- 6 Top at 86", bottom on floor, weight unknown.
- 7 Bottom at 10" above floor, weight unknown.

Housekeeping Pad and Switchgear Information

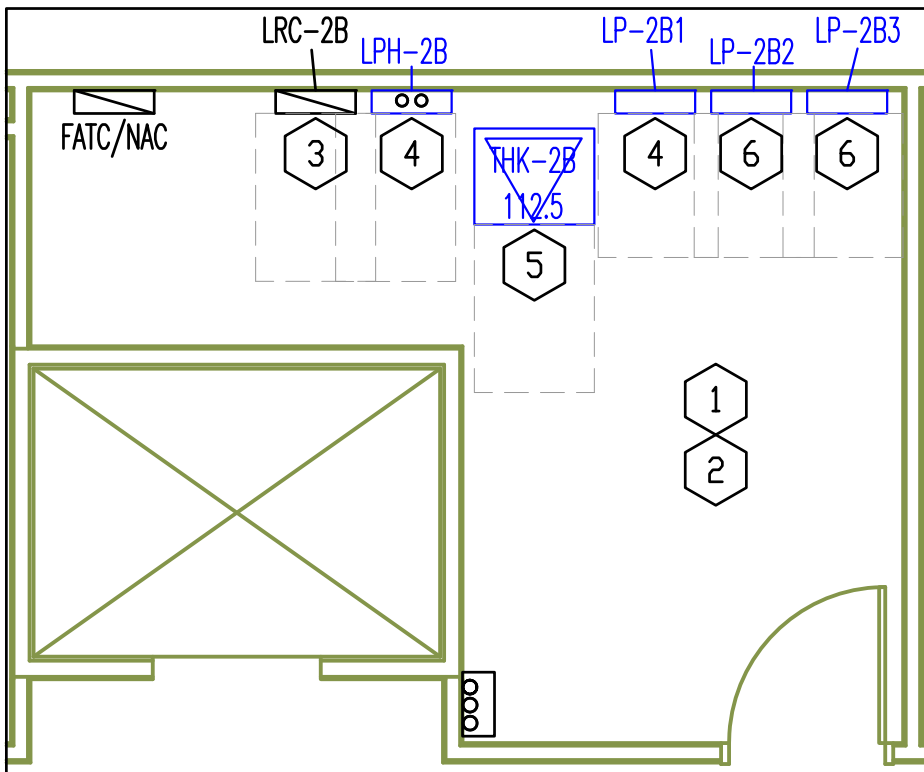


Housekeeping Pad

Scale: 1"=4'

Flagged notes:

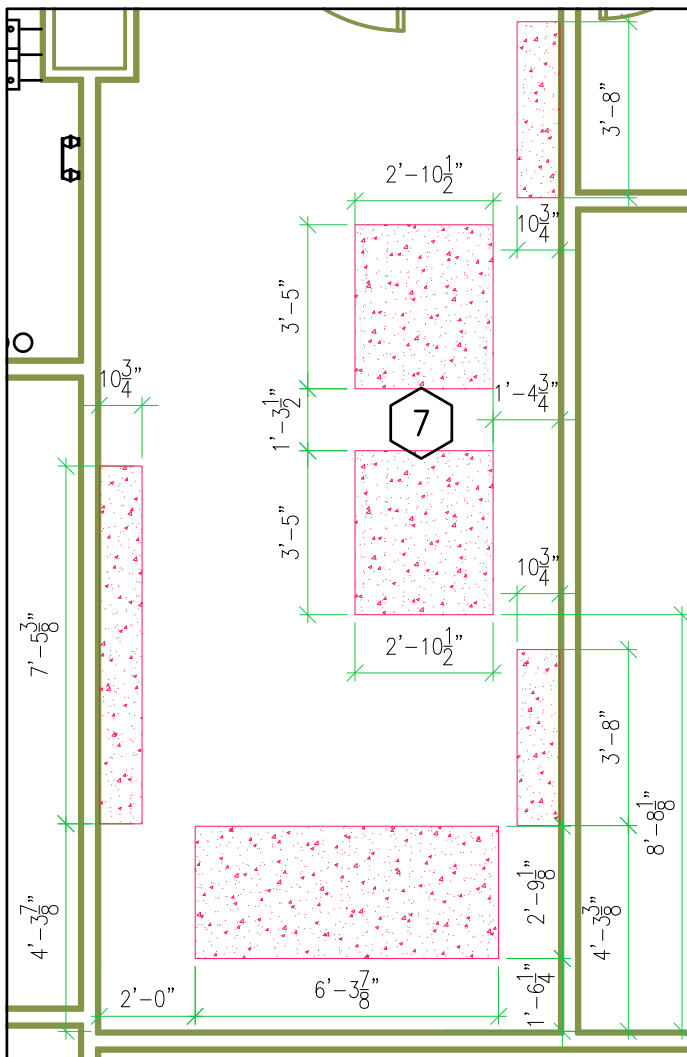
- 1 Dashed lines indicate code required clearance zones.
- 2 Top of all panels at 6'-0" unless otherwise indicated.
- 3 Bottom at (? unknown at this time), weight unknown.
- 4 Top at: 86", bottom on floor, weight unknown.
- 5 Top at: 37.41", bottom at: 3.56" (above housekeeping pad), weight: 675 pounds.
- 6 Bottom at 10" above floor, weight unknown.



Switchgear Information

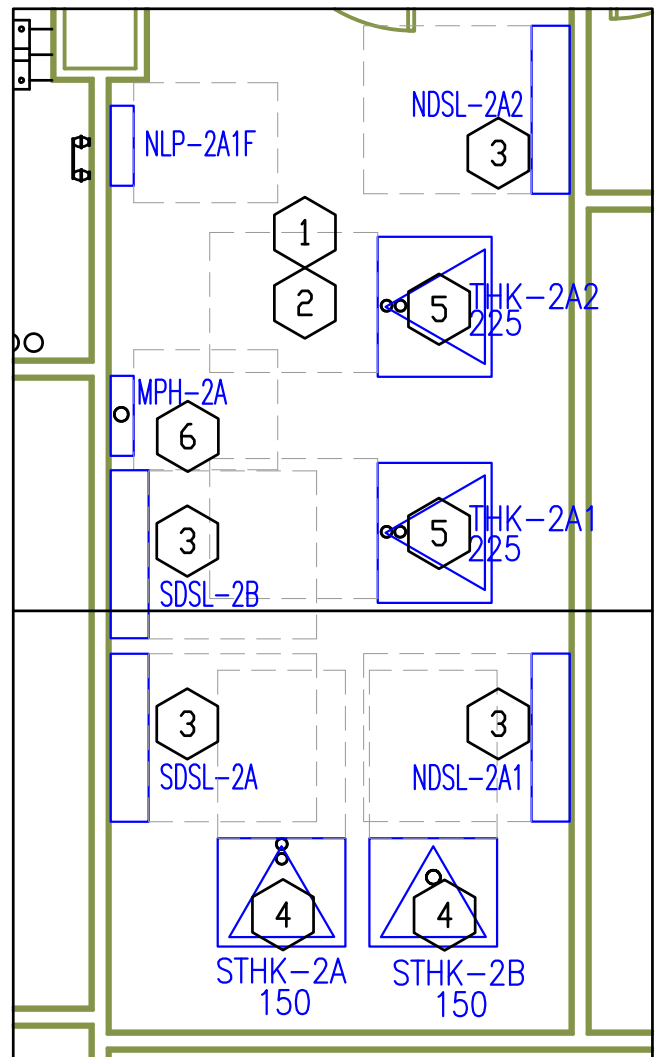
Scale: 1"=4'

Housekeeping Pads and Switchgear Information



Housekeeping Pads

Scale: 1"=4'



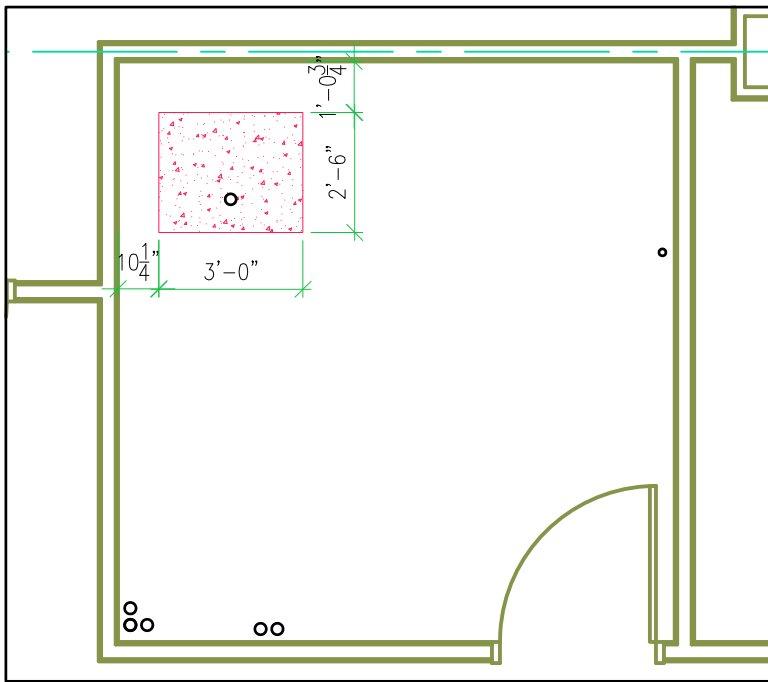
Switchgear Information

Scale: 1"=4'

Flagged notes:

- 1 Dashed lines indicate code required clearance zones.
- 2 Top of all panels at 6'-0" unless otherwise indicated.
- 3 Top at: 86", bottom on floor, weight unknown.
- 4 Top at: 43.8", bottom at: 3.81" (above housekeeping pad), weight: 915 pounds.
- 5 Top at: 49.64", bottom at: 3.81" (above housekeeping pad), weight: 1,125 pounds.
- 6 Bottom at 16" above floor, weight unknown.
- 7 These pads may be joined if it's more economical to do so.

Housekeeping Pads and Switchgear Information

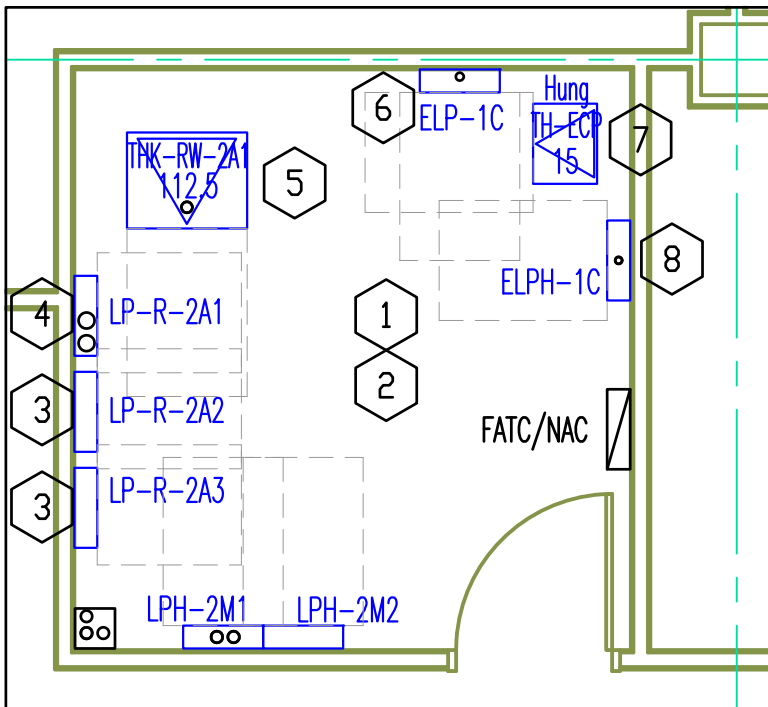


Housekeeping Pads

Scale: 1"=4'

Flagged notes:

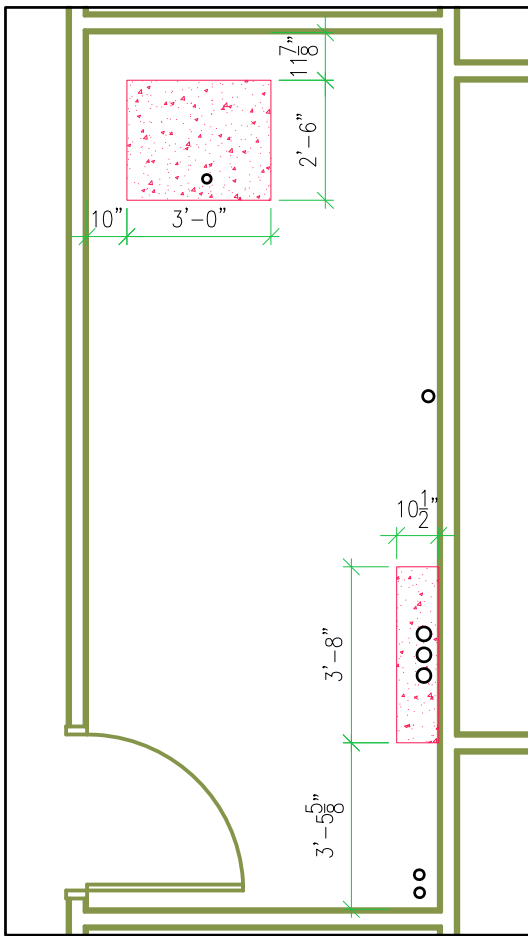
- 1 Dashed lines indicate code required clearance zones.
- 2 Top of all panels at 6'-0" unless otherwise indicated.
- 3 Bottom at 10" above floor, weight unknown.
- 4 Top at: 86", bottom on floor, weight unknown.
- 5 Top at: 37.41", bottom at: 3.56" (above housekeeping pad), weight: 675 pounds.
- 6 Bottom at 22" above floor, weight unknown.
- 7 Bottom at ~8'2" above floor, top at ~10'5" above floor (this transformer is hung, and exact dimensions of the hardware and vibration isolators isn't known), weight: 260 pounds.
- 8 Bottom at 34" above floor, weight unknown.



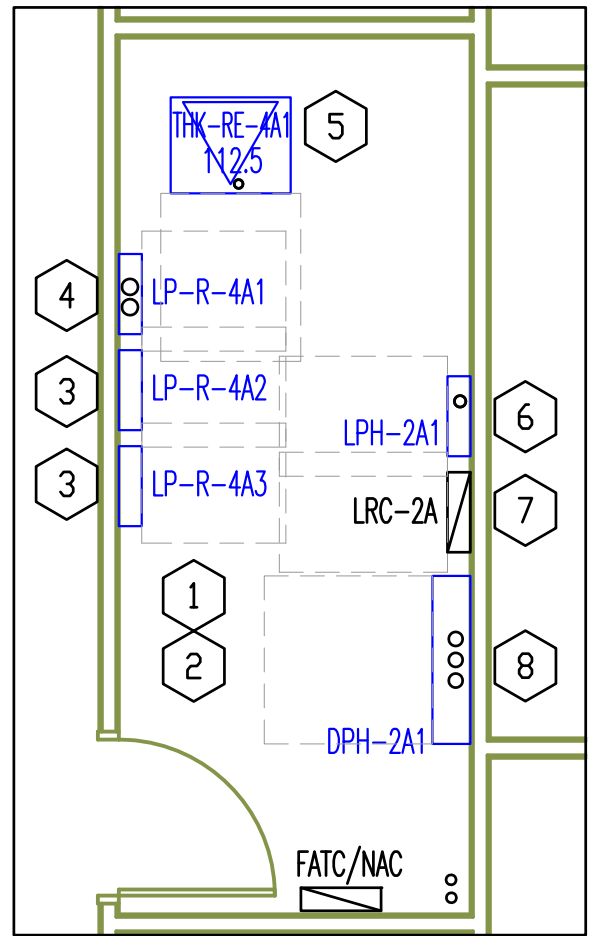
Switchgear Information

Scale: 1"=4'

Housekeeping Pads and Switchgear Information



Housekeeping Pad Scale: 1"=4'



Switchgear Information Scale: 1"=4'

Flagged notes:

- 1 Dashed lines indicate code required clearance zones.
- 2 Top of all panels at 6'-0" unless otherwise indicated.
- 3 Bottom at 10" above floor, weight unknown.
- 4 Top at 86", bottom on floor, weight unknown.
- 5 Top at: 49.84", bottom at: 3.81" (above housekeeping pad), weight: 1,125 pounds.
- 6 Bottom at 4" above floor, weight unknown.
- 7 Bottom at (? unknown at this time), weight unknown.
- 8 Top at 86", bottom on floor, weight unknown.

Housekeeping Pad and Switchgear Information